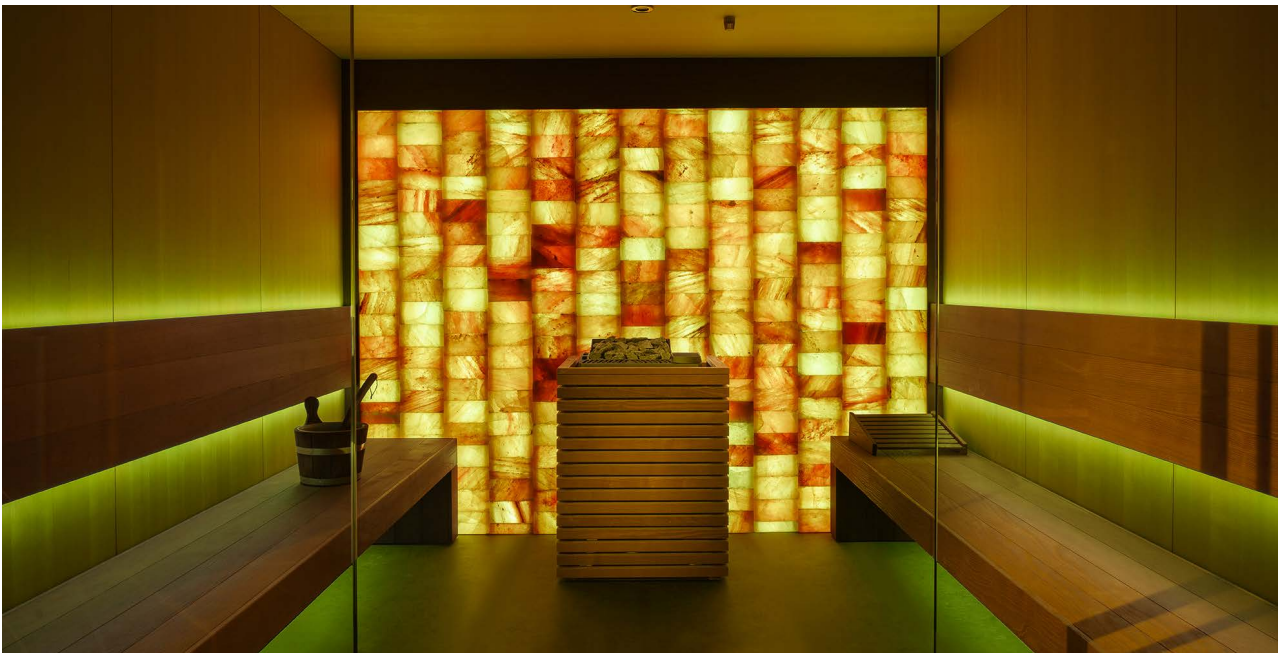


# SALT SAUNA

80°C- 100°C / 3 - 6% UMIDITY  
SPECIAL DREAM PRO COLLECTION

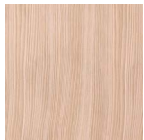


## FINITURE / FINISHING / FINITIONS

Finitura interna pareti

*Internal side walls*

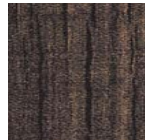
*Finition des murs intérieurs:*



HEMLOCK .01



THERMOWOOD  
ASH .05



THERMOWOOD  
DARK .06



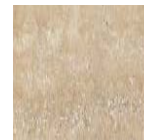
WHITE .10



VULCANO .11



GREY  
CEMENT.13

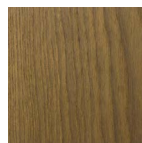


TIVOLI.14

Panca, schienale e pedana  
*Bench, backrest and footboard*  
*Banc, dossier et marchepied*



ABACHI .50

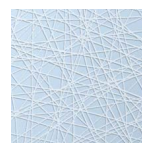


THERMOWOOD  
ASH .52

Vetri frontali satinati  
*Satin-finish front glazing*  
*Vitrage frontal satiné*



GRADIENT  
GLASS.70



TEXTURED  
GLASS.71

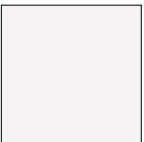


PRINTED  
GLASS.72

Rivestimento ceramico sopra e retro-stufa

*Coating above and behind heater*

*Revêtement en céramique au-dessus et derrière le poêle*



ABSOLUTE  
WHITE.60

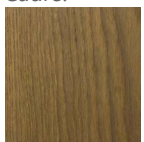


SETA .61

Cornice

*Frame*

*Cadre:*



THERMOWOOD  
ASH .52



CORIAN  
WHITE .20



CORIAN  
BLACK .21

Cornice opzionale

*Optional Frame*

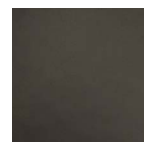
*Cadre optionnel:*



STAINLESS  
STEEL .30



BRONZE .31



BURNISHED  
GREY .32



MATT  
GOLDEN.33

## DESCRIPTION

### ELEMENTI STANDARD / STANDARD ELEMENTS / ÉLÉMENTS STANDARD

- Struttura portante costituita da montanti e traversi di Abete con materiale isolante.  
*Cabin structure consisting of Spruce wooden uprights and beams with insulating material.*  
*Structure portante composée de montants et de traverses en sapin avec matériau isolant.*
- Rivestimento interno con pannelli con rivestimento a scelta.  
*Interior finishing with panels of your choice.*  
*Doublure intérieure avec panneaux avec choix de revêtement.*
- Panca Dream in Abachi o Thermowood.  
*Dream bench in Abachi or Thermowood.*  
*Banc Dream en Hemlock ou bois thermoturci.*
- Schienale in Abachi o Thermowood.  
*Backrest in Abachi or Thermowood.*  
*Dossier en abachi ou bois thermoturci.*
- Copristufa di protezione in Abachi o Thermowood.  
*Protection cover heater in Abachi or Thermowood.*  
*Garde-corps de protection pour le poêle.*
- Riscaldatore elettrico con pietre per Sauna finlandese.  
*Electric heater with stones for Finnish sauna.*  
*Chauffage électrique en pierre pour sauna finlandais*
- Griglia di sicurezza per protezione al fuoco con spegnimento automatico della stufa.  
*Safety grid for fire protection with automatic heater switching off.*  
*Grille de sécurité pour la protection contre l'incendie avec arrêt automatique du poêle.*
- Rivestimento in gres porcellanato sopra e dietro la stufa, ignifugo e inalterabile con calore.  
*Cladding above and behind the heater in Porcelain Tiles fireproof and unalterable linings with heat.*  
*Revêtement en céramique au-dessus et derrière le radiateur ignifuge et inaltérables à la chaleur.*
- Porta da 90 cm in vetro temperato da 10 mm.  
*90 cm door in 10 mm tempered glass.*  
*Porte 90 cm en verre trempé 10 mm.*
- Maniglione acciaio inox, con interno in legno.  
*Stainless steel pull handle, with wooden interior.*  
*Poignée en acier inoxydable, avec intérieur en bois.*
- Cerniere oleodinamiche per porta in vetro che consentono la chiusura automatica, costante e controllata della porta.  
*Hydraulic hinges for glass doors that allow automatic, constant and controlled closing of the door.*  
*Charnières hydrauliques pour portes vitrées permettant une fermeture automatique, constante et contrôlée de la porte.*
- Facciata frontale in vetro temperato da 10 mm.  
*10mm tempered glass facade*  
*Façade avant en verre trempé de 10 mm.*
- Cromoterapia su panca e schienale  
*Chromotherapy on bench and backrest.*  
*Thérapie par les couleurs RGB sur le banc et le dossier.*
- Parete di Sale Himalayano.  
*Himalayan salt wall.*  
*Mur de sel de l'Himalaya.*
- Cornice in Thermowood o Corian.  
*Frame in Thermowood or Corian*  
*Cadre en bois thermoturci ou Corian.*
- Pulsante d'emergenza.  
*Emergency button.*  
*Bouton d'urgence.*
- Poggiatesta.  
*Headrest.*  
*Appui-tête.*
- Secchiello, mestolo e clessidra.  
*Bucket, ladle and hourglass.*  
*Seau, louche et sablier.*
- Combi termo-igrometro.  
*Combi thermo-hygrometer.*  
*Thermo-hygromètre combiné.*



OPTIONAL CON INCREMENTO DI PREZZO / OPTIONAL WITH PRICE INCREASE / OPTIONAL AVEC AUGMENTATION DE PRIX

-----> page 34